



OWL TIMECLOCK



Analog Wall Clocks

Working together in perfect harmony

- Sync all your wall clocks to the same time
- 250,000sq. ft. guaranteed coverage (more upon request)
- 1 year free replacement warranty
- No FCC site license needed
- Automatically adjusts for Daylight Savings Time
- Resets after power outages
- Optional bell scheduling is available
- Made in the USA

[Request Quote](#)

TTSync™ Analog Clocks harmonize the workplace with reliable wireless time keeping and style selections to complement any environment.

Synchronized Analog Wall Clock Features:

- Searches for dependable time signal directly from TimeTrax Sync™ Wireless RF Transmitter (sold separately) to ensure consistently updated time
- Available in wide variety of unique face formats & bezel colors/materials to complement any décor
- Low profile, ABS or hardwood frame with non-glare shatterproof polycarbonate lens for easy viewing and durability
- Includes anti-theft wall bracket for secure, safe wall mounting. Flexible mounting options, including dual clock wall & ceiling brackets for enhanced viewing in long hallways & large open spaces (sold separately)

Warranty

- 1 year free replacement warranty



Face Type H



Face Type D



Face Type B



Face Type F



Face Type L



Face Type A



Face Type I



Face Type G



OWL TIMECLOCK

www.owltimeclock.ca

Head Office: **Toronto** 310 Judson St., Unit 6, Toronto, Ontario M8Z 5T6
Tel: 416-252-1186 Toll Free: 1-877-567-0633

Montreal
Tel: (514) 333-3273

Edmonton
Tel: (780) 438-2181

Calgary
Tel: (403) 258-2611

Vancouver
Tel: (604) 873-6571

Owl Timeclock



Analog Wireless Wall Clock Highlights

- Available in battery, 24VAC & 100/240VAC options to accommodate variety of installation and infrastructure configurations
- Automatic calibration (searches for time signal up date once per day) for maintenance-free operation
- Automatically adjusts for Daylight Savings Time & resets for power outage eliminating the need for manual time adjustments
- Custom logo and graphic option available to enhance your company's corporate ID program

Accessories

Item Description:	Part #:
13" Analog Dual Clock Wall Bracket Kit	42320
13" Analog Dual Clock Ceiling Bracket Kit	42443
Security Mounting Plate Replacement Key	42281
13" Analog Clock Chrome Wire Guard	42314
17" Analog Clock Chrome Wire Guard	42315
13" Analog Clock Weather Cover	42533
3.6 Volt Lithium Battery	42224

Specifications

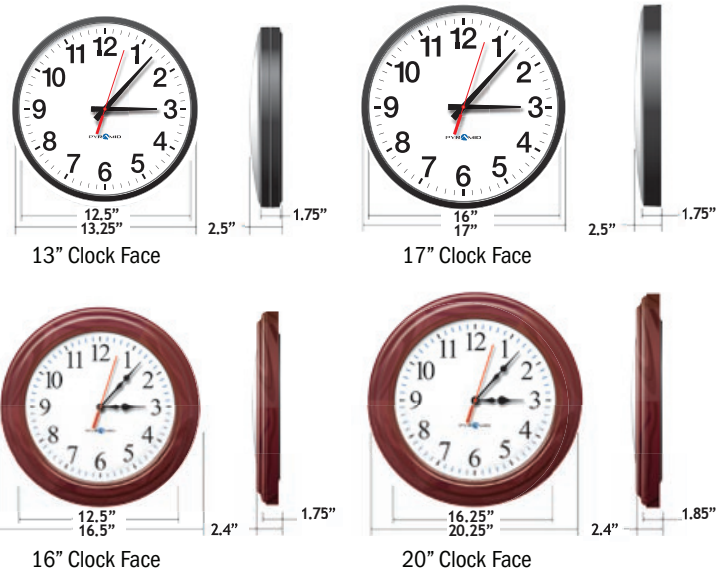
Analog Wireless Wall Clock Specifications

Size / Colour	Weight	Dimensions (diameter x depth)
13" Black & Silver Bezel	2.8lbs (1.3kg)	13.25" x 2.5" (33.7cm x 6.5cm)
17" Black & Silver Bezel	4.1lbs (1.9kg)	17" x 2.5" (43cm x 6.5cm)
16" Wood Bezel	5.5lbs (2.5kg)	16.5" x 2.4" (42cm x 6.4cm)
20" Wood Bezel	8.1lbs (3.8kg)	20.25" x 2.4" (51.1cm x 6.4cm)

Details	Description
Operating Temp	-30°F (-34.44°C) to 130°F (54.44°C)
Bezel Color	<div style="display: flex; justify-content: space-between;"> <div> Black </div> <div> Silver </div> </div> <div style="display: flex; justify-content: space-between; margin-top: 5px;"> <div> Cherry </div> <div> Oak </div> <div> Walnut </div> </div>
Display Format	12 Hour, 12 Hour w/seconds, & 12/24 Hour
Power	Battery (3.6V lithium), 24V or 100/240AC ¹
Time Update	Every 24 hours
Mounting	Wall & Dual Wall or Ceiling (black or silver bezel)
Warranty	1 year free replacement warranty

¹Wood Bezel Clocks available in battery power format only.

Size Options



OWL TIMECLOCK

www.owltimeclock.ca

Head Office: **Toronto** 310 Judson St., Unit 6, Toronto, Ontario M8Z 5T6
Tel: 416-252-1186 Toll Free: 1-877-567-0633

Montreal
Tel: (514) 333-3273

Edmonton
Tel: (780) 438-2181

Calgary
Tel: (403) 258-2611

Vancouver
Tel: (604) 873-6571